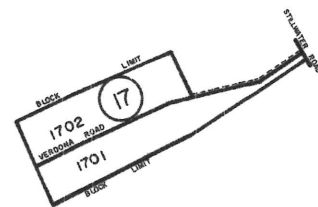
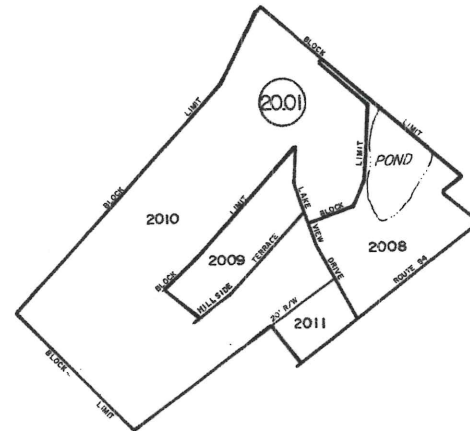


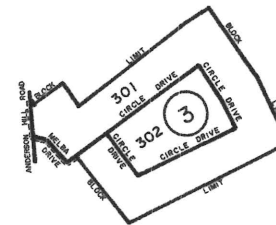
REVISIONS		
DATE	NAME	NO.
FEB 19, 1992	KIRK R. SCHMIDT, L.S.	
MAY 14, 2005	EDWARD P. BRANDS, P.L.S.	18608
MAY 25, 2006	EDWARD P. BRANDS, P.L.S.	18608



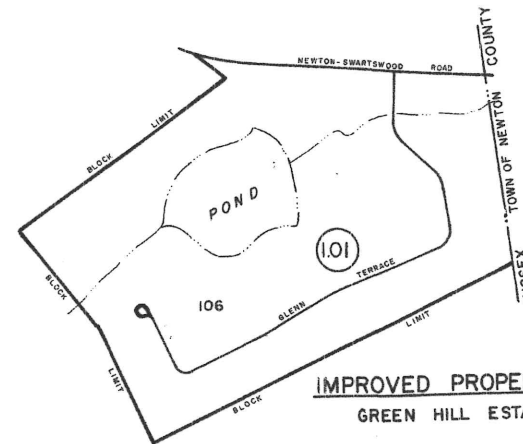
MARIO & EMILIA VERDONI SUB.



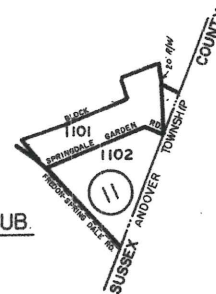
PLEASANT VIEW ESTATES



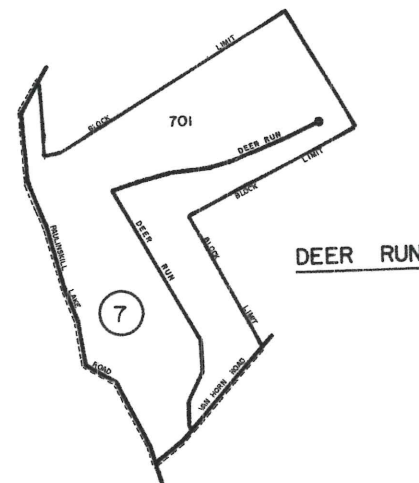
CARLTON B. FISHER SUB.



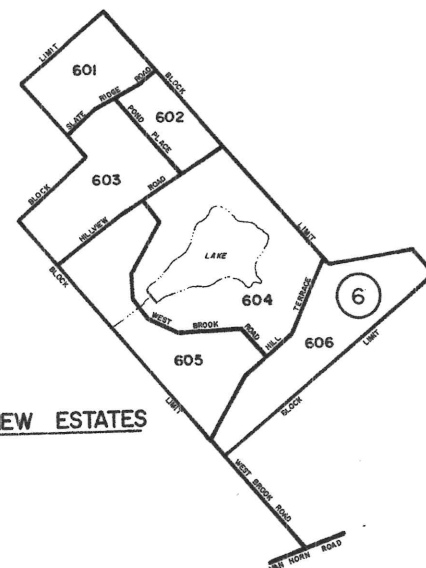
IMPROVED PROPERTIES SUB.
GREEN HILL ESTATES



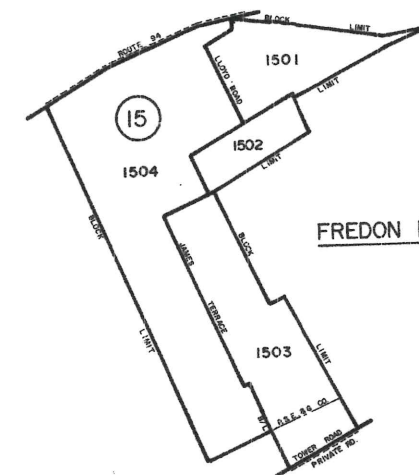
ALBERT WESTRA SUB.



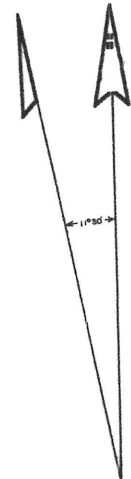
DEER RUN



WESTVIEW ESTATES



FREDON HEIGHTS



TAX MAP

FREDON TWP.
SUSSEX COUNTY,
NEW JERSEY

SCALE: 1" = 400' DATE: 8-1-61

J. L. JACOBS & COMPANY
53 WEST JACKSON BOULEVARD
CHICAGO 4, ILLINOIS

REVISED: 5/68-6/82

**INDEX SHEET
LEGEND**

(25)

SHEET NUMBER

12 BLOCK NUMBER

SHEET LIMIT

I HEREBY CERTIFY THAT THIS MAP HAS BEEN
REVISED UNDER MY IMMEDIATE SUPERVISION
AND COMPLIES WITH THE LAWS OF THE
STATE OF NEW JERSEY.

Edward P. Brands 5/14/05
EDWARD P. BRANDS, N.J.P.L.S. LIC. NO. 18608



I HEREBY CERTIFY THAT THIS MAP HAS BEEN
REVISED UNDER MY IMMEDIATE SUPERVISION
AND COMPLIES WITH THE LAWS OF THE
STATE OF NEW JERSEY.

Kirk R. Schmidt
KIRK R. SCHMIDT, N.J.L.S. LIC. NO. 23032

JULY 1984	
1-29-75	
DATE	DATE
REVISED	
HAROLD E. PELLOW & ASSOCIATES, INC.	
HAROLD E. PELLOW P.E. & L.S. NO. 13229	

I HEREBY CERTIFY THAT THIS MAP AND THE SURVEY
HAS BEEN MADE UNDER MY IMMEDIATE SUPERVISION
AND COMPLIES WITH THE LAWS OF THE STATE OF
NEW JERSEY.

John B. Aicher
JOHN B. AICHER
LICENSE NO. 4292

NEW JERSEY DEPARTMENT OF THE TREASURY
DIVISION OF TAXATION
ENGINEERING & RAILROAD TAX BUREAU
APPROVED AS A TAX MAP PURSUANT TO THE
PROVISIONS OF CHAPTER 175, LAWS OF 1913, ETC.
FOR THE DIRECTOR, DIVISION OF TAXATION
BY *C. J. Barnes* STATE SUPERVISOR
DATE DEC 19 1961 SERIAL NO. 849