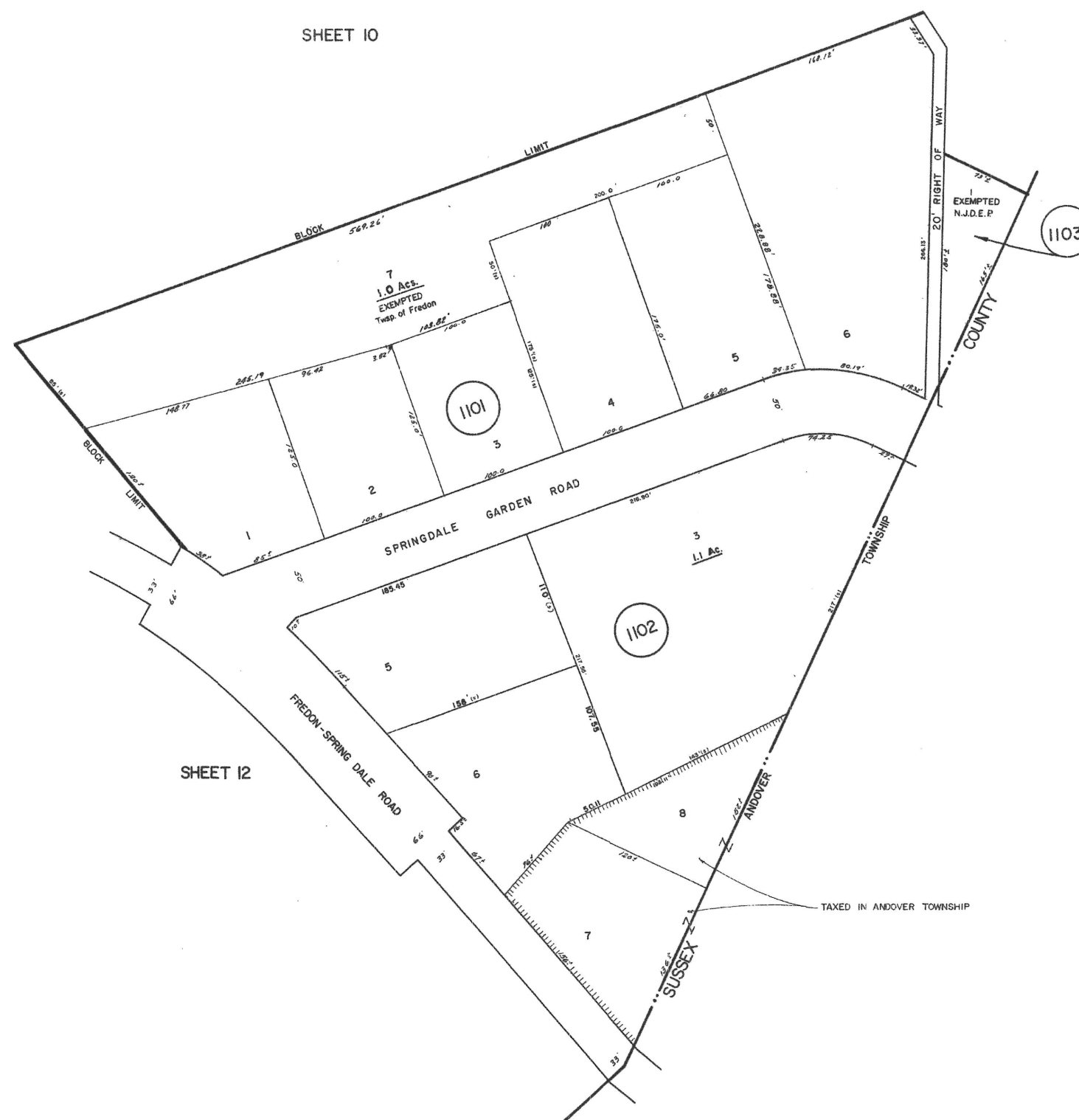


REVISIONS		
DATE	NAME	NO.
Apr. 29, 2006	EDWARD P. BRANDS, P.L.S.	18606

SHEET 11



SHEET 12

SHEET 10

SEPT. 1, 1983	"	"	"
FEB. 19, 1992	GENERAL REVISIONS	"	"
FEB. 1991	BL 1102, L 7 & 8 ANDOVER TWP	KIRK R. SCHMIDT	BY
DATE	REVISION	BY	

I hereby certify that portions of this map have been revised under my immediate supervision, and these revisions comply with the laws of the State of New Jersey.

Kirk R. Schmidt, L.S. No. 23932

3-21-74	
DATE	DATE
REVISED	
HAROLD E. FELLOW & ASSOCIATES, INC.	
HAROLD E. FELLOW - P.E. & L.S. NO. 13229	

TAX MAP
FREDON TWP
SUSSEX COUNTY,
NEW JERSEY

SCALE: 1" = 50' DATE: 8-1-61

J. L. JACOBS & COMPANY
 53 WEST JACKSON BOULEVARD
 CHICAGO 4, ILLINOIS

REVISED: 5/62, 9/63

INDEX SHEET
LEGEND

(25) SHEET NUMBER

12 BLOCK NUMBER

..... SHEET LIMIT

NEW JERSEY DEPARTMENT OF THE TREASURY
 DIVISION OF TAXATION
 ENGINEERING & SURVEYING TAX BUREAU

APPROVED AS A TAX MAP PURSUANT TO THE PROVISIONS OF CHAPTER 175, LAWS OF 1913, ETC. FOR THE DIRECTOR, DIVISION OF TAXATION

BY: *C. E. Fallow* STATE SUPERVISOR
 DATE: DEC 1 9 1961 SERIAL NO. 340