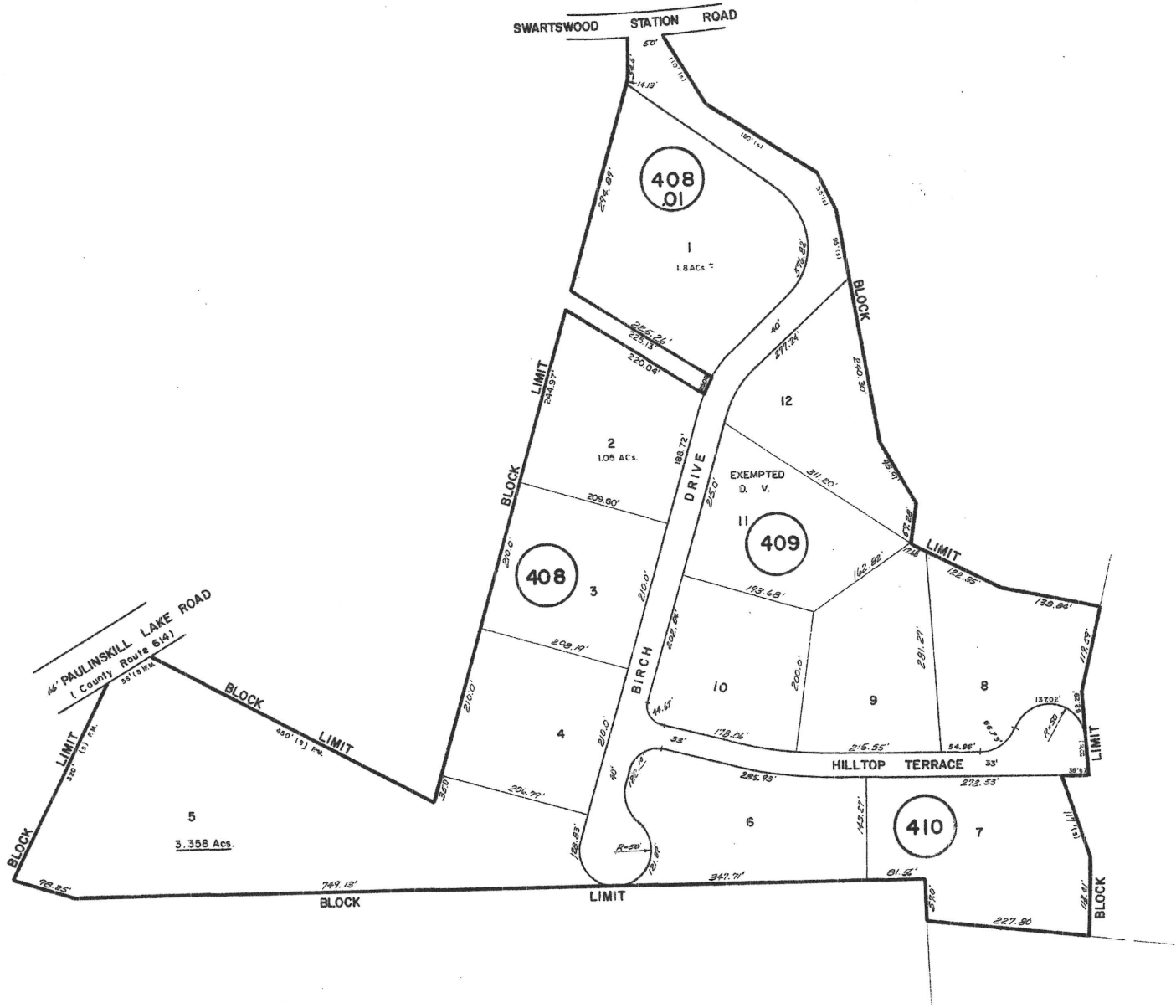


DATE	BY	REVISION
Nov 24, 1995	EDWARD P. BRANDS, P.L.S.	18608
Jan 28, 2005	EDWARD P. BRANDS, P.L.S.	18608
May 25, 2006	EDWARD P. BRANDS, P.L.S.	18608

SHEET 4

SHEET 16

SHEET 4



SHEET 7

DATE	REVISIONS	BY
FEB 13, 1992	dimensions along Birch Dr.	K.R. SCHMIDT

I HEREBY CERTIFY THAT THIS MAP HAS BEEN REVISED UNDER MY IMMEDIATE SUPERVISION AND COMPLIES WITH LAWS OF THE STATE OF NEW JERSEY.

K. R. Schmidt
KIRK R. SCHMIDT N.J.L.S. #23932

NEW JERSEY DEPARTMENT OF THE TREASURY
DIVISION OF TAXATION
PROPERTY ADMINISTRATION
APPROVED AS A TAX MAP SUBMITTAL TO THE AUTHORITY OF
FOR THE DIRECTOR, DIVISION OF TAXATION
JAMES J. COLL, CHIEF, LOCAL ASSESSMENT COMPLIANCE C.T.A.
Santo C. DiDonato, SUPERVISING FIELD REPRESENTATIVE C.T.A.
DATE: SEP 28 2005 SERIAL NO. 340

JULY 1994	
JUNE 1994	
JULY 1994	
JUNE 1994	
JULY 1994	
JUNE 1994	
JULY 1994	
JUNE 1994	
JULY 1994	
JUNE 1994	

TAX MAP
FREDON TWP.
SUSSEX COUNTY,
NEW JERSEY

SCALE: 1" = 100' DATE: 7-1-66

MONROE ENGINEERING, INC.
804 SARAH STREET
STROUDSBURG, PENNSYLVANIA

REVISED: _____

**INDEX SHEET
LEGEND**

(25) SHEET NUMBER

12 BLOCK NUMBER

..... SHEET LIMIT